

Socioeconomic inequality in malnutrition in developing countries

Ellen Van de Poel,^a Ahmad Reza Hosseinpoor,^b Niko Speybroeck,^c Tom Van Ourti^a & Jeanette Vega^b

Objective The objectives of this study were to report on socioeconomic inequality in childhood malnutrition in the developing world, to provide evidence for an association between socioeconomic inequality and the average level of malnutrition, and to draw attention to different patterns of socioeconomic inequality in malnutrition.

Methods Both stunting and wasting were measured using new WHO child growth standards. Socioeconomic status was estimated by principal component analysis using a set of household assets and living conditions. Socioeconomic inequality was measured using an alternative concentration index that avoids problems with dependence on the mean level of malnutrition.

Findings In almost all countries investigated, stunting and wasting disproportionately affected the poor. However, socioeconomic inequality in wasting was limited and was not significant in about one third of countries. After correcting for the concentration index's dependence on mean malnutrition, there was no clear association between average stunting and socioeconomic inequality. The latter showed different patterns, which were termed mass deprivation, queuing and exclusion. Although average levels of malnutrition were higher with the new WHO reference standards, estimates of socioeconomic inequality were largely unaffected by changing the growth standards.

Conclusion Socioeconomic inequality in childhood malnutrition existed throughout the developing world, and was not related to the average malnutrition rate. Failure to tackle this inequality is a cause of social injustice. Moreover, reducing the overall rate of malnutrition does not necessarily lead to a reduction in inequality. Policies should, therefore, take into account the distribution of childhood malnutrition across all socioeconomic groups.

Bulletin of the World Health Organization 2008;86:282–291.

Une traduction en français de ce résumé figure à la fin de l'article. Al final del artículo se facilita una traducción al español. الترجمة العربية لهذه الخلاصة في نهاية النص الكامل لهذه المقالة.

Introduction

Epidemiological evidence points to a small set of primary causes of child mortality that are the main killers of children aged less than 5 years: pneumonia, diarrhoea, low birth weight, asphyxia and, in some parts of the world, HIV and malaria. Malnutrition is the underlying cause of one out of every two such deaths.^{1,2} The evidence also shows that child death and malnutrition are not equally distributed throughout the world. They cluster in sub-Saharan Africa and south Asia, and in poor communities within these regions.^{3,4} Disparities in health outcomes between the poor and the rich are increasingly attracting attention from researchers and policy-makers, thereby fostering a substantial growth in the literature on health equity.^{5–8} “Socioeconomic inequality” in malnutrition refers to the degree to which childhood malnutrition rates differ between more and less socially and economically advantaged

groups. This is different from “pure inequality”, which takes into account all factors influencing childhood malnutrition. The available literature documenting socioeconomic inequality in malnutrition focuses mainly on individual countries or regions.^{9–14} At a more global level, Wagstaff and Watanabe¹⁵ provided evidence on socioeconomic inequality in malnutrition across 20 developing countries. Other relevant cross-country studies include those of Pradhan et al.,¹⁶ who describe total inequality, and Smith et al.,¹⁷ who describe inequalities between urban and rural populations. The latter two studies, however, provide no evidence on socioeconomic inequality within developing countries.

This paper contributes to the literature in several ways. First, it updates and enlarges the evidence base on average malnutrition and socioeconomic inequality in malnutrition using the most recent Demographic and Health

Survey (DHS) data from 47 developing countries. The inclusion of such a large number of countries makes it possible to obtain insights into the regional clustering of poor–rich malnutrition disparities in the developing world and into the association between the average level of malnutrition and socioeconomic inequality. Given the focus on average rates of malnutrition in international development targets, it is of interest to establish how countries compare in terms of average rates of malnutrition and inequality in malnutrition. In addition to quantifying the degree of socioeconomic inequality using a single index, this paper also illustrates the different patterns found for the distribution of malnutrition across socioeconomic groups.

Second, in this paper, childhood malnutrition is measured using the new growth standards that have recently been released by WHO.¹⁸ The new standards are based on children from

^a Erasmus University Rotterdam, Rotterdam, the Netherlands.

^b World Health Organization, Geneva, Switzerland.

^c Institute for Tropical Medicine Antwerp, Antwerp, Belgium.

Correspondence to Ellen Van de Poel (e-mail: vandepoel@few.eur.nl).

doi:10.2471/BLT.07.044800

(Submitted: 11 June 2007 – Revised version received: 13 September 2007 – Accepted: 18 September 2007 – Published online: 19 February 2008)

Brazil, Ghana, India, Norway, Oman and the United States of America, and adopt a fundamentally prescriptive approach that is designed to describe how all children should grow, rather than merely how they actually grew in a single reference population at a specified time.¹⁹ For example, the new reference population only includes children from study sites where at least 20% of women were willing to follow breast-feeding recommendations. To the best of our knowledge, this is the first study that presents estimates of malnutrition based on these new standards in a large set of countries. To check the sensitivity of the results to this change in reference group, the analysis was also carried out using the older United States National Center for Health Statistics (NCHS) reference population.²⁰

Finally, in this paper, socioeconomic inequality in malnutrition is measured using the concentration index, which takes into account inequality across the entire socioeconomic distribution. Usually, when it is applied to binary indicators, such as mortality and stunting, the concentration index depends on the mean of the indicator. This would impede cross-country comparisons because there are substantial differences in means between locations. To avoid this problem, we use an alternative but related index recently introduced by Erreygers.²¹

Methods

Data

The data used came from all 47 DHSs that contained information on the nutritional status of children aged up to 5 years. The data represent countries from four regions: 26 in sub-Saharan Africa, seven in the eastern Mediterranean, five in south and south-east Asia, and nine in Latin America and the Caribbean. Table 1 shows the countries and the characteristics of the data sets used.

Analysis

Anthropometric data on the height-for-age and weight-for-height of children were used to quantify chronic and acute malnutrition, respectively. A small height-for-age reflects the slowing of skeletal growth, and is considered to be a reliable indicator of long-standing malnutrition in childhood. Low weight-for-height, on the other hand, indicates

Table 1. Characteristics of Demographic and Health Survey (DHS) data sets

Country	Year of survey	Sample size	Country	Year of survey	Sample size
Sub-Saharan Africa			Eastern Mediterranean		
Benin	2001	3 842	Armenia	2000	1 517
Burkina Faso	2003	8 142	Egypt	2000	10 296
Cameroon	2004	3 168	Kazakhstan	1999	566
Central African Republic ^a	1994/1995	2 297	Kyrgyzstan ^a	1997	971
Chad	2004	4 414	Morocco	2003/2004	5 356
Comoros ^a	1996	921	Turkey	1998	2 782
Côte d'Ivoire	1998/1999	1 477	Uzbekistan	1996	954
Ethiopia	2000	2 833	South and south-east Asia		
Gabon	2000	3 482	Bangladesh	2004	5 911
Ghana	2003	3 094	Cambodia	2000	3 522
Guinea	1999	2 961	India ^a	1998/1999	24 989
Kenya	2003	4 719	Nepal	2001	6 163
Madagascar	2003/2004	2 908	Pakistan	1990/1991	4 079
Malawi	2000	9 162	Latin America and the Caribbean		
Mali	2001	9 382	Bolivia	2003	9 134
Mauritania	2000/2001	3 306	Brazil	1996	4 056
Mozambique	2003	3 808	Colombia	2005	12 393
Namibia	2000	2 925	Dominican Republic	2002	9 288
Niger ^a	1998	3 914	Guatemala	1998/1999	3 879
Nigeria	2003	4 293	Haiti	2000	5 510
Rwanda	2000	6 038	Nicaragua	2001	5 875
Togo ^a	1998	3 443	Paraguay	1990	3 614
Uganda	2000/2001	5 145	Peru	2000	11 585
United Republic of Tanzania	2004	7 132			
Zambia	2001/2002	1 932			
Zimbabwe	1999	2 632			

^a Births in the 3 years preceding the survey instead of the usual 5 years.

a deficit in tissue and fat mass, and this measure is more sensitive to temporary food shortages and episodes of illness. A low weight-for-age is also used in the literature to indicate malnutrition, but it is not used here as it does not discriminate well between temporary and more permanent malnutrition.^{9,20,22}

A child was considered stunted or wasted if his or her height-for-age or weight-for-height, respectively, was two standard deviations or more below the median for the reference population.^{9,16} We used these crude binary indicators of stunting and wasting because their average values are much easier to interpret intuitively than continuous height-for-age and weight-for-age z-scores, and they, therefore, facilitate the comparison of stunting and wasting rates across socioeconomic groups and between countries.

This paper used the new WHO child growth standards that were released in April 2006.¹⁸ The robustness of the paper's results against this change from the NCHS growth standards was also checked.²⁰

An indicator of socioeconomic status was developed using principal component analysis.²³ This indicator combined information on a set of household assets and living conditions: the ownership of a car, phone, television, radio, refrigerator, bicycle and motorcycle; the availability of electricity, clean water and a toilet; and the material used to construct the wall, roof and floor of the household dwelling.

Socioeconomic inequality in stunting and wasting were calculated by means of a recently proposed generalization – introduced by Erreygers²¹ (see also Van de Poel et al.²⁴ for an

application) – of the traditional concentration index (C), which was proposed by Wagstaff et al.²⁵ This generalization overcomes several of the methodological shortcomings of the traditional concentration index while preserving its main characteristics: (i) negative values imply that malnutrition is more concentrated among poorer children, (ii) if all children, irrespective of their socioeconomic status, suffer equally from malnutrition, the concentration index would equal zero, and (iii) transferring malnutrition from a richer to a poorer individual reduces the concentration index. Of particular importance for this paper, it is worth mentioning that the generalization avoids dependence on the mean for the binary indicator (Wagstaff discussed a related issue for the bounds of the concentration index).²⁶ Not correcting for this dependence on the mean would impede cross-country comparisons because there are substantial differences in means be-

tween locations. In addition, it would result in a predetermined association between the average level of malnutrition and socioeconomic inequality.

Since the DHSs rely on multistage sampling procedures, all estimates take account of sampling weights, and statistical inference is adjusted for clustering at the level of the primary sampling unit. The statistical inference for the index recently proposed by Erreygers was based on an adapted version of the convenient regression approach.^{27,28}

Results

Table 2 shows socioeconomic inequality in stunting. In almost all countries, stunting disproportionately affected the poor. The concentration indices (based on WHO child growth standards and calculated as suggested by Erreygers)²¹ were significant in all countries, except Madagascar, and ranged from -0.0005 in Madagascar to -0.42 in Guatemala.

Socioeconomic inequality in stunting appeared largest in the Latin America and the Caribbean region, where the median concentration index equalled -0.22 .

The results on wasting are presented in Table 3. Wasting was generally more concentrated among the poor, but socioeconomic inequality was much smaller than for stunting. For about one third of countries, socioeconomic inequality was not significant. The median concentration index was largest in south and south-east Asia (-0.05 based on WHO child growth standards).

Table 2 and Table 3 also show average stunting and wasting rates, respectively, based on the new WHO child growth standards and the NCHS growth standards. For both indicators of malnutrition, the average rate was higher when the new WHO reference standards were used. However, socioeconomic inequality was fairly similar with the two different growth standards.

Table 2. Estimated stunting rates in children aged less than 5 years according to socioeconomic status

Country	Prevalence of stunting by socioeconomic status quintile ^a (%)					Average stunting ^b (%)		Concentration index ^{b,c}	
	Q1	Q2	Q3	Q4	Q5	WHO	NCHS	WHO	NCHS
Sub-Saharan Africa									
Benin	43.78	45.38	39.98	34.96	27.35	38.61	30.37	-0.15	-0.13
Burkina Faso	48.44	46.96	46.49	40.20	27.45	42.98	38.56	-0.15	-0.15
Cameroon	44.19	43.42	38.85	31.25	19.20	36.49	31.68	-0.21	-0.21
Central African Republic	47.26	41.80	39.89	42.03	33.22	39.84	33.65	-0.11	-0.12
Chad	48.62	44.84	46.07	39.43	33.92	44.16	40.95	-0.09	-0.09
Comoros	46.11	47.08	41.45	37.97	26.47	40.53	33.77	-0.15	-0.19
Côte d'Ivoire	38.66	29.41	31.07	26.10	19.28	31.26	25.17	-0.17	-0.17
Ethiopia	60.94	55.04	58.23	54.07	42.27	56.91	51.22	-0.09	-0.10
Gabon	43.46	35.53	26.44	18.17	18.17	26.03	20.65	-0.22	-0.20
Ghana	45.11	38.27	40.42	30.42	20.01	35.62	29.43	-0.19	-0.19
Guinea	39.08	38.87	35.50	32.42	24.95	34.44	26.07	-0.13	-0.11
Kenya	43.18	39.34	35.48	27.98	22.87	35.90	30.56	-0.17	-0.16
Madagascar	53.90	54.72	59.96	58.15	50.51	56.06	48.34	-0.00 ^d	-0.01 ^d
Malawi	60.64	59.59	52.80	57.79	39.32	54.08	49.02	-0.14	-0.14
Mali	48.79	49.60	45.10	42.40	28.43	41.78	37.57	-0.17	-0.17
Mauritania	45.05	41.47	40.69	32.80	31.65	39.25	34.50	-0.14	-0.16
Mozambique	55.79	53.08	53.84	43.45	34.70	51.50	46.16	-0.11	-0.14
Namibia	33.10	31.68	23.87	18.45	25.00	28.07	22.64	-0.13	-0.09
Niger	50.81	49.09	46.26	49.30	36.53	47.05	41.08	-0.08	-0.09
Nigeria	54.30	50.13	49.55	36.33	25.20	43.19	38.41	-0.25	-0.25
Rwanda	52.34	51.60	51.52	47.00	31.88	47.21	42.37	-0.14	-0.15
Togo	37.45	34.25	30.05	25.88	19.03	30.37	21.72	-0.16	-0.14
Uganda	45.84	46.75	49.46	42.79	29.00	44.50	38.61	-0.07	-0.08
United Republic of Tanzania	48.17	48.22	48.22	44.22	23.91	43.63	37.05	-0.15	-0.16
Zambia	59.53	58.41	58.33	49.88	40.59	53.21	46.15	-0.17	-0.18
Zimbabwe	37.37	34.65	32.33	29.87	23.45	31.48	26.45	-0.11	-0.12
<i>Median</i>	<i>46.69</i>	<i>46.06</i>	<i>43.28</i>	<i>38.70</i>	<i>27.40</i>	<i>41.15</i>	<i>35.77</i>	<i>-0.15</i>	<i>-0.15</i>

(Table 2, cont.)

Country	Prevalence of stunting by socioeconomic status quintile ^a (%)					Average stunting ^b (%)		Concentration index ^{b,c}	
	Q1	Q2	Q3	Q4	Q5	WHO	NCHS	WHO	NCHS
South and south-east Asia									
Bangladesh	58.19	55.89	53.32	43.03	30.26	49.85	43.02	-0.20	-0.20
Cambodia	54.32	52.78	48.60	43.51	39.86	48.47	44.29	-0.15	-0.16
India	56.43	53.35	49.02	45.54	41.56	49.68	43.75	-0.13	-0.13
Nepal	63.76	63.40	58.92	47.08	42.01	56.46	50.51	-0.19	-0.18
Pakistan	61.91	62.94	53.58	49.13	35.98	54.12	49.59	-0.20	-0.24
<i>Median</i>	<i>58.19</i>	<i>55.89</i>	<i>53.32</i>	<i>45.54</i>	<i>39.86</i>	<i>49.85</i>	<i>44.29</i>	<i>-0.19</i>	<i>-0.16</i>
Eastern Mediterranean									
Armenia	25.08	26.01	14.88	14.01	12.45	18.36	13.00	-0.12	-0.09
Egypt	31.80	26.41	22.69	19.23	15.18	24.00	18.66	-0.13	-0.12
Kazakhstan	17.81	14.91	9.29	9.40	6.32	13.93	9.75	-0.10	-0.10
Kyrgyzstan	41.40	37.66	24.36	28.64	18.88	32.89	24.84	-0.18	-0.17
Morocco	34.87	26.06	20.07	16.68	16.02	23.28	18.18	-0.18	-0.17
Turkey	34.25	23.52	17.48	9.50	5.01	19.04	16.01	-0.24	-0.22
Uzbekistan	41.12	38.35	32.21	33.77	36.00	37.46	31.28	-0.07	-0.09
<i>Median</i>	<i>34.25</i>	<i>26.06</i>	<i>20.07</i>	<i>16.68</i>	<i>15.18</i>	<i>23.28</i>	<i>18.18</i>	<i>-0.13</i>	<i>-0.13</i>
Latin America and the Caribbean									
Bolivia	48.50	39.71	29.68	22.87	14.29	32.43	26.38	-0.31	-0.29
Brazil	29.46	13.25	7.61	5.41	5.42	13.42	10.46	-0.22	-0.19
Colombia	25.14	17.19	13.89	10.59	6.39	15.70	11.52	-0.15	-0.13
Dominican Republic	21.11	13.51	12.44	8.28	7.45	11.76	8.85	-0.12	-0.10
Guatemala	68.45	67.75	64.23	43.06	25.46	52.80	46.37	-0.42	-0.42
Haiti	38.01	33.83	29.97	21.65	11.74	27.10	21.93	-0.22	-0.19
Nicaragua	42.16	31.73	22.14	12.05	9.46	24.67	20.13	-0.30	-0.27
Paraguay	28.52	24.60	20.84	11.00	7.17	18.20	13.92	-0.20	-0.18
Peru	54.91	43.00	24.91	17.00	14.36	31.29	25.42	-0.41	-0.38
<i>Median</i>	<i>38.01</i>	<i>31.73</i>	<i>22.14</i>	<i>12.05</i>	<i>9.46</i>	<i>24.67</i>	<i>20.13</i>	<i>-0.22</i>	<i>-0.23</i>

^a Based upon WHO Multicentre Growth Reference Study (MGRS).

^b Derived using WHO and United States National Center for Health Statistics (NCHS) growth standards.

^c Calculated as suggested by Erreygers.²¹

^d Social inequality is not significant at the 10% level.

Consequently, the following discussion relates mainly to the WHO child growth standards.

Fig. 1 plots the average level of stunting against the concentration index for socioeconomic inequality in stunting. For illustrative purposes, the negative of the concentration index is shown in this figure and Fig. 2, such that a high value on the y-axis indicates high socioeconomic inequality in favour of the rich. There was no clear association between average stunting and socioeconomic inequality in stunting (Spearman coefficient = 0.20, $P = 0.17$). If only socioeconomic inequality in the Latin America and Caribbean region was considered, there was an association between a high average level of stunting and high socioeconomic inequality in stunting.

Fig. 2 shows the same association for wasting and clearly illustrates that the socioeconomic inequality in wasting is much smaller than that in stunting. There was a negative association between average wasting and the concentration index for wasting (Spearman coefficient = -0.60, $P < 0.001$), which implies that countries with higher average wasting tend to have higher socioeconomic inequality. However, Fig. 2 also shows that the magnitude of the association was low, at best. The low values of the concentration index for socioeconomic inequality, combined with the finding that the relative variability in the average wasting level across countries (coefficient of variation = 0.68) was higher than that in the average stunting level (coefficient of variation = 0.35), suggest that one

should not focus too much on the significance of the association between average wasting and socioeconomic inequality in wasting.

When the traditional concentration index (or the one suggested by Wagstaff)²⁶ was used, different results were obtained for these associations. That is, there was a strong positive association between average stunting and socioeconomic inequality in stunting (Spearman coefficient = 0.78, $P < 0.001$), whereas the association between average wasting and socioeconomic inequality in wasting was not significant (Spearman coefficient = 0.14, $P = 0.35$). This confirms the importance of correcting for dependence on the mean.

Table 2 and Table 3 also show the distributions of stunting and wasting for different socioeconomic status

quintiles. The pattern of the distribution can vary, and this is illustrated for three selected countries in Fig. 3.²⁹ In Rwanda, socioeconomic inequality in stunting could be characterized as “mass deprivation” – stunting is highly prevalent within the majority of the population while a small privileged class is much better off. A second pattern, as seen in Ghana, could be described as “queuing” – average stunting is lower than in the previous pattern, but richer population groups are better off while the poor have to wait for a “trickle-down” effect. Third, socioeconomic inequality in stunting in Brazil took the form of “exclusion” where the prevalence of stunting is relatively low in the majority of the population but was much higher in a poor deprived minority.

Discussion

This study illustrates that socioeconomic inequality in malnutrition is

present throughout the developing world. The study findings show that the better-off suffer less from malnutrition and that the resultant inequality is much more pronounced for stunting than for wasting. This finding could have been expected as previous evidence has suggested that socioeconomic status has a smaller effect on the stochastic conditions that precipitate wasting (e.g. unforeseen environmental factors and disease) than on long-term malnourishment.^{9,15} Socioeconomic inequality in stunting was largest in the Latin America and Caribbean region, with Guatemala being an outlier, which is also in line with previous findings.^{11,15,30}

Average wasting and stunting rates derived using the WHO child growth standards were larger than those derived using the NCHS reference population. This was also found by de Onis et al. for Bangladesh, the Dominican Republic and a pooled sample of North

American and European children.³¹ However, estimates of socioeconomic inequality in both stunting and wasting were similar with the different growth standards, as were the associations between socioeconomic inequality and average stunting or wasting.

When studying the association between average malnutrition and socioeconomic inequality in malnutrition, the choice of the inequality index used does matter. With Erreygers' index,²¹ there was no clear association between average stunting and socioeconomic inequality in stunting (though some evidence for a limited association with wasting was found), while use of the traditional concentration index (or the one suggested by Wagstaff)²⁶ produced, instead, the opposite findings. It is worth noting that Wagstaff and Watanabe¹⁵ found evidence for an inverse relationship between being underweight and socioeconomic inequality

Table 3. Estimated wasting rates in children aged less than 5 years according to socioeconomic status

Country	Prevalence of wasting by socioeconomic status quintile ^a (%)					Average wasting ^b (%)		Concentration index ^{b,c}	
	Q1	Q2	Q3	Q4	Q5	WHO	NCHS	WHO	NCHS
Sub-Saharan Africa									
Benin	12.09	12.06	8.42	7.94	5.76	9.33	7.55	-0.06	-0.04
Burkina Faso	22.01	23.04	23.22	21.27	15.50	21.48	18.72	-0.04	-0.02 ^d
Cameroon	8.24	8.46	5.86	4.00	2.93	6.23	5.28	-0.06	-0.05
Central African Republic	10.64	10.79	10.53	8.55	7.44	9.25	7.18	-0.03	-0.03
Chad	17.69	14.89	15.90	16.77	15.88	16.09	13.53	0.00 ^d	0.00 ^d
Comoros	15.52	13.78	10.36	5.91	8.43	11.00	8.40	-0.08	-0.06
Côte d'Ivoire	7.80	8.25	5.66	5.06	4.25	6.85	7.80	-0.02 ^d	-0.04
Ethiopia	13.11	13.51	13.52	12.19	7.10	12.70	10.71	-0.02	-0.04
Gabon	4.35	3.02	5.33	5.17	3.27	4.26	2.83	0.00 ^d	-0.01 ^d
Ghana	8.57	7.90	8.67	10.20	8.15	8.70	7.12	0.00 ^d	0.00 ^d
Guinea	12.38	10.02	10.48	8.34	8.27	9.92	9.17	-0.04	-0.02
Kenya	8.70	5.35	4.80	3.65	7.59	6.23	5.62	-0.05	-0.05
Madagascar	11.83	11.40	9.17	8.95	7.19	10.04	7.75	-0.04	-0.04
Malawi	8.71	7.32	6.92	6.62	5.76	7.02	5.52	-0.02	-0.02
Mali	12.68	15.49	14.24	13.26	9.49	12.91	10.65	-0.04	-0.04
Mauritania	18.25	16.26	15.20	12.04	12.38	15.27	13.40	-0.06	-0.07
Mozambique	8.44	5.88	5.99	5.39	4.70	6.55	4.60	-0.03	-0.02 ^d
Namibia	13.76	8.61	7.71	6.53	9.14	9.85	8.91	-0.08	-0.04
Niger	30.78	27.24	27.02	25.25	14.98	25.66	20.63	-0.08	-0.09
Nigeria	12.41	13.76	9.98	10.98	9.11	11.34	9.48	-0.03	-0.03
Rwanda	9.11	10.52	8.69	8.14	7.66	8.88	6.85	-0.02	-0.02
Togo	13.86	19.59	13.48	12.17	8.57	13.98	12.42	-0.06	-0.04
Uganda	5.37	5.15	5.99	4.60	3.50	5.11	4.04	-0.01 ^d	0.00
United Republic of Tanzania	4.62	4.00	3.50	2.93	3.09	3.68	3.12	-0.01	0.00 ^d
Zambia	5.83	4.70	7.79	5.84	6.39	6.11	4.88	0.01 ^d	0.01 ^d
Zimbabwe	9.87	12.26	9.72	6.38	4.99	8.64	6.44	-0.06	-0.04
<i>Median</i>	<i>11.24</i>	<i>10.66</i>	<i>8.93</i>	<i>8.04</i>	<i>7.51</i>	<i>9.29</i>	<i>7.65</i>	<i>-0.04</i>	<i>-0.03</i>

(Table 3, cont.)

Country	Prevalence of wasting by socioeconomic status quintile ^a (%)					Average wasting ^b (%)		Concentration index ^{b,c}	
	Q1	Q2	Q3	Q4	Q5	WHO	NCHS	WHO	NCHS
South and south-east Asia									
Bangladesh	16.51	16.48	14.62	12.84	11.51	14.72	12.90	-0.05	-0.03
Cambodia	17.33	17.49	13.68	17.93	18.37	16.89	15.01	0.01 ^d	-0.01 ^d
India	22.88	21.82	19.22	16.96	17.13	19.82	15.61	-0.05	-0.04
Nepal	12.26	14.51	11.91	9.36	7.53	11.46	9.69	-0.04	-0.03
Pakistan	18.97	12.47	9.16	12.03	7.88	12.56	9.21	-0.08	-0.05
<i>Median</i>	<i>17.33</i>	<i>16.48</i>	<i>13.68</i>	<i>12.84</i>	<i>11.51</i>	<i>14.72</i>	<i>12.90</i>	<i>-0.05</i>	<i>-0.04</i>
Eastern Mediterranean									
Armenia	2.19	2.76	2.32	3.27	2.03	2.53	1.97	0.00 ^d	0.01 ^d
Egypt	3.33	3.41	3.20	2.89	2.82	3.17	2.52	-0.01 ^d	-0.01 ^d
Kazakhstan	3.04	3.09	1.69	0.86	1.76	2.51	1.82	-0.01 ^d	0.00 ^d
Kyrgyzstan	3.21	3.43	4.11	3.16	1.06	3.28	3.44	-0.01 ^d	-0.01 ^d
Morocco	14.22	9.34	9.87	9.19	10.52	10.74	9.31	-0.04	-0.05
Turkey	4.00	3.73	2.27	1.98	2.67	3.01	1.90	-0.01	0.00 ^d
Uzbekistan	19.44	7.41	12.10	13.53	10.26	13.74	11.63	-0.08 ^d	-0.11
<i>Median</i>	<i>3.33</i>	<i>3.43</i>	<i>3.20</i>	<i>3.16</i>	<i>2.67</i>	<i>3.17</i>	<i>2.52</i>	<i>-0.01</i>	<i>-0.01^d</i>
Latin America and the Caribbean									
Bolivia	1.77	1.40	2.01	1.79	1.55	1.70	1.24	0.00 ^d	0.00 ^d
Brazil	4.41	2.48	2.24	1.41	2.64	2.75	2.34	-0.02	-0.01 ^d
Colombia	1.74	1.69	1.68	1.27	1.12	1.54	1.29	-0.01	-0.01
Dominican Republic	3.16	1.90	2.77	1.88	1.44	2.15	1.70	-0.01	-0.02
Guatemala	2.76	3.86	4.21	1.10	2.71	2.91	2.52	-0.01 ^d	-0.01 ^d
Haiti	8.09	5.40	5.91	4.05	5.52	5.81	4.61	-0.02 ^d	-0.01 ^d
Nicaragua	3.86	2.23	2.78	0.87	1.66	2.37	2.07	-0.02	-0.01
Paraguay	0.73	0.56	0.47	0.67	0.39	0.56	0.33	0.00 ^d	0.00 ^d
Peru	2.16	1.02	1.03	0.72	0.71	1.15	0.94	-0.01	-0.01
<i>Median</i>	<i>2.96</i>	<i>2.07</i>	<i>2.51</i>	<i>1.34</i>	<i>1.61</i>	<i>2.26</i>	<i>1.88</i>	<i>-0.01</i>	<i>-0.01^d</i>

^a Based upon WHO Multicentre Growth Reference Study (MGRS).

^b Derived using WHO and United States National Center for Health Statistics (NCHS) growth standards.

^c Calculated as suggested by Erreygers.²¹

^d Social inequality is not significant at the 10% level.

on using the traditional concentration index. Applying Erreygers' index to the data in their paper reverses this finding, which illustrates Erreygers' point about the need to be careful when comparing concentration indices across countries with very different stunting levels.

Socioeconomic inequality in stunting occurred in different patterns, which could be described as mass deprivation, queuing and exclusion. The manner in which systems based on primary health care will develop will be different in these different contexts. In the case of exclusion, programmes targeted at specific population groups, namely the poorest, are urgently needed to achieve pro-equity outcomes while in other instances, such as mass deprivation, a broad strengthening of the whole system, either alone or combined with targeting, is required.²⁹

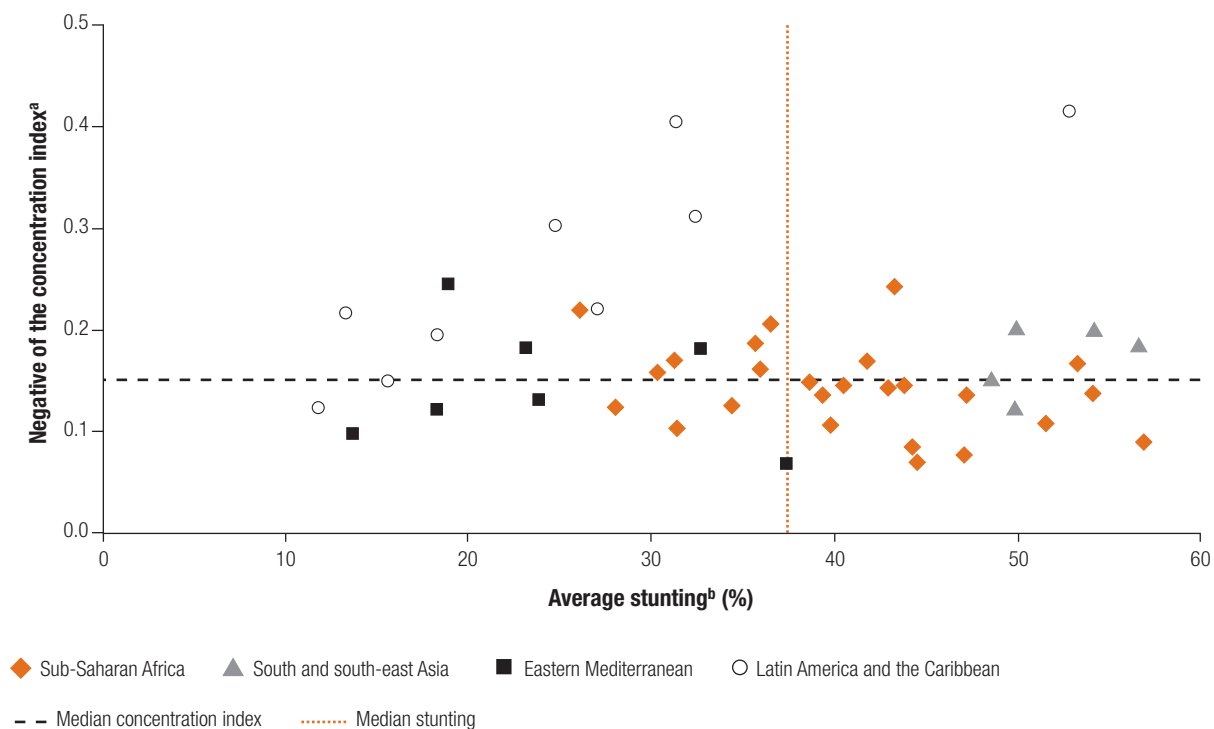
In this respect, the distribution of malnutrition across socioeconomic groups, as shown in Table 2 and Table 3, can provide a useful tool for health policy-makers as it can easily be used to classify countries according to the above-mentioned patterns.

There are several limitations to this study. First, it has to be noted that data were only available for children aged 0–3 years instead of 0–5 years for six of the 47 countries (i.e. the Central African Republic, the Comoros, India, Kyrgyzstan, the Niger and Togo). Since anthropometric deficits accumulate over time, average malnutrition rates for these countries were underestimated compared with rates for other countries. However, as already discussed by Wagstaff and Watanabe, changes in the age limit do not systematically produce an upward or downward bias in socio-

economic inequality.¹⁵ Furthermore, the results were found to be robust when these countries were excluded.

Second, the use of an asset index to capture socioeconomic status has its shortcomings. Houweling et al. have shown that the choice of asset can influence the observed magnitude of the health inequality, but also conclude that, in the absence of reliable information on income or expenditure, the use of such an asset index is generally a good way of distinguishing between socioeconomic layers within a population (see also Wagstaff and Watanabe).^{32,33} With respect to the present study, it is important to note that a separate asset index was constructed for each country. It was, therefore, possible for the correlation between assets and socioeconomic status to vary between countries.

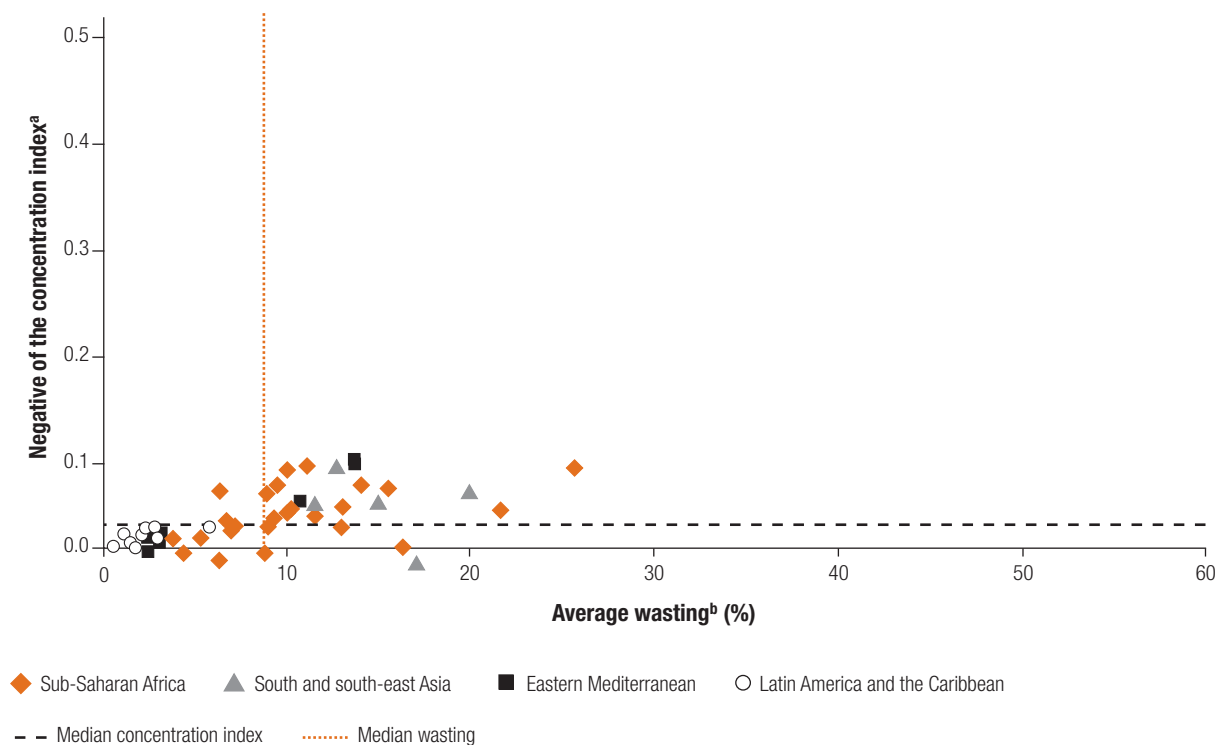
Fig. 1. Average stunting versus the negative of the concentration index



^a Calculated as suggested by Erreygers.²¹

^b Derived using WHO child growth standards.

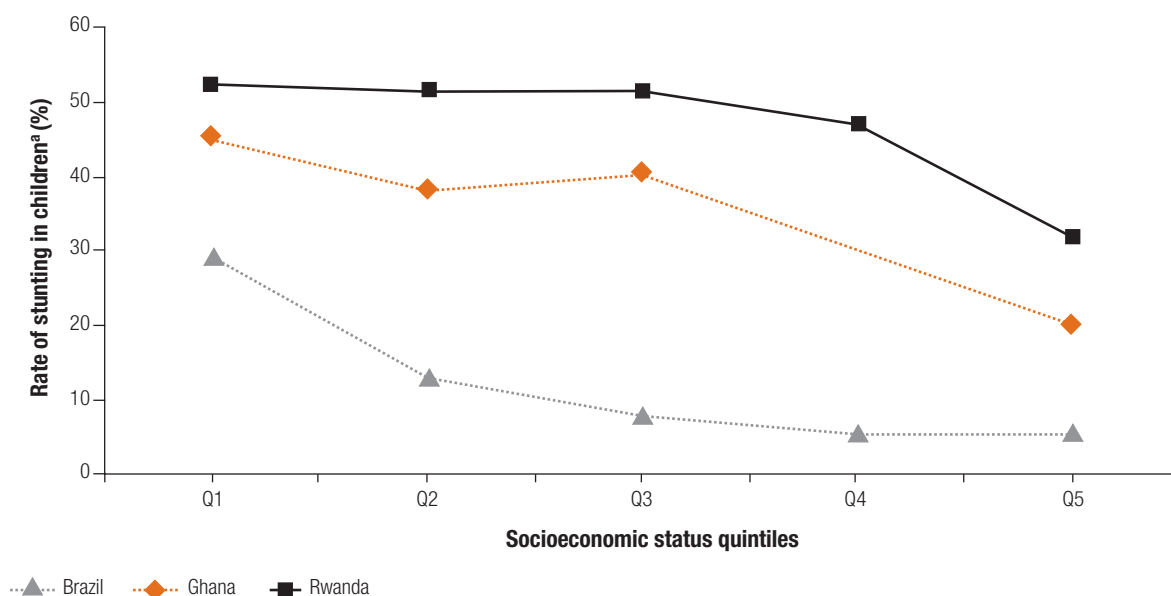
Fig. 2. Average wasting versus the negative of the concentration index



^a Calculated as suggested by Erreygers.²¹

^b Derived using WHO child growth standards.

Fig. 3. Distribution of stunting across socioeconomic status quintiles for three countries



^a Derived using WHO child growth standards.

Third, the present study investigated only socioeconomic inequality in childhood malnutrition in the developing world and the extent to which inequality was related to the average malnutrition rate. Clearly, this is only a first step in a broader research agenda whose aim is to analyse the determinants of socioeconomic inequality in childhood malnutrition within and across developing countries. The next step should consist of combining literature findings on both socioeconomic and proximate determinants of malnutrition, such as feeding practices, health-care seeking behaviour and the mother's nutritional status (e.g. Smith et al., Mosley and Chen, and Ruel et al.),^{17,34,35} with a decomposition approach, such as the one proposed by Wagstaff et al.¹⁰

Conclusion

The findings of this study have both methodological and policy implications. With regard to methodology, this paper is the first to study socioeconomic inequality in childhood malnutrition in the developing world using recently introduced WHO child growth standards. It was found that, although average malnutrition is higher when using this reference population, esti-

mates of socioeconomic inequality are fairly similar to those derived using the NCHS reference population. In addition, the analysis demonstrated that, when studying the association between average malnutrition and the concentration index, it is important to take into account the dependence of this index on the mean value of the binary malnutrition indicator. When this was done, there was no clear relationship between average malnutrition and socioeconomic inequality.

The absence of a relationship between average malnutrition and socioeconomic inequality also has important implications for health policy. It suggests that there was no fundamental difference in socioeconomic inequality between countries with a low average level of malnutrition and those with a much higher average level. While it is not clear from this study whether this is the consequence of a deliberate policy focus on average malnutrition levels, it does indicate that policy-makers should be aware that a focus on reducing the average malnutrition level does not seem to lead to obvious generalized benefits. Nevertheless, the main goals and targets of large-scale development programmes such as the Millennium Development Goals continue to be

couched in terms of improving population averages.³⁶

The results of this study indicate that not only the degree of socioeconomic inequality in malnutrition but also its pattern should be of concern in setting health policies. To reduce malnutrition in, for example, a range of Latin American countries, policies should be targeted at the poor. In contrast, in many sub-Saharan African countries, there is substantial scope for progress by focusing simply on the general population, in addition to targeting the poor. ■

Acknowledgements

Many thanks to Guido Erreygers for stimulating discussions on this topic. Ellen Van de Poel acknowledges the University of Antwerp and the World Health Organization for support and funding. Niko Speybroeck is also affiliated with the Public Health School, Faculty of Medicine, Université Catholique de Louvain (Belgium). Tom Van Ourti is a Postdoctoral Fellow of the Netherlands Organisation for Scientific Research – Innovational Research Incentives Scheme – VENI and a member of the Tinbergen Institute (the Netherlands).

Competing interests: None declared.

Résumé

Inégalités socioéconomiques face à la malnutrition dans les pays en développement

Objectif Dresser un rapport sur les inégalités socioéconomiques face à la malnutrition infantile dans le monde en développement, fournir des preuves d'une association entre ces inégalités et le niveau moyen de malnutrition et attirer l'attention sur les différents schémas d'inégalités socioéconomiques en matière de malnutrition.

Méthodes On a mesuré le retard de croissance et l'émaciation en utilisant les nouvelles normes OMS de croissance de l'enfant. On a estimé le statut socioéconomique par analyse des composantes principales en considérant une série de biens ménagers et de conditions de vie. On a mesuré les inégalités socioéconomiques avec un indice de concentration non conventionnel, évitant les problèmes de dépendance vis-à-vis du niveau moyen de malnutrition.

Résultats Dans presque tous les pays étudiés, le retard de croissance et l'émaciation touchaient de manière disproportionnée la population pauvre. Cependant, les inégalités socioéconomiques en matière de retard de croissance étaient limitées et n'étaient pas significatives dans un tiers des pays. Après correction pour la dépendance à l'égard de la malnutrition moyenne par l'indice

de concentration, on n'a constaté aucune association claire entre retard de croissance moyen et inégalités socioéconomiques. Ces dernières obéissaient à différents schémas, désignés par les termes : privation massive, en attente de bénéficier de l'effet d'écoulement et exclusion. Même si l'on obtenait des valeurs plus élevées des niveaux moyens de malnutrition avec les nouvelles normes OMS, les estimations des inégalités socioéconomiques restaient dans une large mesure inchangées avec le passage aux nouvelles normes de croissance.

Conclusion Dans l'ensemble du monde en développement, il existe des inégalités socioéconomiques face à la malnutrition infantile qui ne sont pas liées au taux de malnutrition moyen. L'échec dans la réduction de ces inégalités est source d'injustice sociale. En outre, faire baisser le taux global de malnutrition ne permet pas nécessairement de réduire ces inégalités. Les politiques doivent donc prendre en compte la distribution de la malnutrition infantile parmi l'ensemble des groupes socioéconomiques.

Resumen

Desigualdades socioeconómicas y malnutrición en los países en desarrollo

Objetivo Informar sobre las desigualdades socioeconómicas en relación con la malnutrición infantil en el mundo en desarrollo, aportar evidencia demostrativa de una relación entre la desigualdad socioeconómica y el nivel medio de malnutrición y señalar a la atención diferentes modelos de desigualdad socioeconómica en materia de malnutrición.

Métodos Se midieron el retraso del crecimiento y la emaciación utilizando los nuevos patrones de crecimiento infantil de la OMS. La situación socioeconómica se determinó mediante un análisis de componentes principales basado en un conjunto de bienes domésticos y condiciones de vida, y la desigualdad socioeconómica, mediante un índice de concentración alternativo que evita los problemas que plantea la dependencia del nivel medio de malnutrición.

Resultados En casi todos los países investigados, los problemas de retraso del crecimiento y de emaciación afectaban desproporcionadamente a los pobres. Sin embargo, la desigualdad socioeconómica en cuanto a la emaciación era limitada y carecía de significación en aproximadamente una tercera parte de los

países. Después de corregir para la dependencia del índice de concentración de la malnutrición media, no se observó una relación clara entre el retraso del crecimiento promedio y la desigualdad socioeconómica. Esta última mostró diversas pautas, descritas como privación masiva, colas y exclusión. Aunque los niveles promedio de malnutrición fueron mayores con los nuevos patrones de referencia de la OMS, las estimaciones de la desigualdad socioeconómica apenas se vieron afectadas al cambiar los patrones de crecimiento.

Conclusión La desigualdad socioeconómica en materia de malnutrición infantil, un problema extendido en el mundo en desarrollo, no está relacionada con la tasa promedio de malnutrición. El hecho de no afrontar dicho problema genera injusticia social. Además, la reducción de la tasa global de malnutrición no conduce necesariamente a una reducción de esa desigualdad. Por consiguiente, en las políticas al respecto se debe tener en cuenta la distribución de la malnutrición infantil entre todos los grupos socioeconómicos.

ملخص

أثر الجور الاجتماعي والاقتصادي في الإصابة بسوء التغذية في البلدان النامية

منسب التركيز البديل الذي يتفادى ما يحدثه الاعتماد على المستوى المتوسط لسوء التغذية من مشكلات.

الموجودات: اتضح للباحثين أنه في جميع البلدان التي خضعت للدراسة كان التقرُّم والهزال يصيب الفقراء أكثر من غيرهم. ورغم ذلك فإن الجور الاجتماعي والاقتصادي في ما يتعلق بالهزال كان محدوداً ولم تكن له أهمية يعتد بها إحصائياً في ما يقرب من ثلث البلدان. وبعد تصحيح الاعتماد على وسطي سوء التغذية ومنسب التركيز له، لم يجدوا ترابطاً واضحاً بين معدل التقرُّم والجور الاجتماعي والاقتصادي. وقد اتضح أيضاً أن للجور الاجتماعي

الهدف: استهدفت الدراسة إعداد تقرير عن الجور الاجتماعي والاقتصادي في سوء التغذية لدى الأطفال في العالم النامي، وتقديم بيانات حول الترابط بين الجور الاجتماعي والاقتصادي ومتوسط مستوى سوء التغذية ولجذب الانتباه إلى الأنماط المختلفة للجور الاجتماعي والاقتصادي.

الطريقة: قام الباحثون بقياس كل من التقرُّم والهزال مستخدمين معايير منظمة الصحة العالمية لنمو الأطفال. وقدرت الوضع الاجتماعي والاقتصادي بتحليل العناصر الأساسية، وذلك باستخدام مجموعة من الأصول الأسرية والمعيشية. أما الجور الاجتماعي والاقتصادي فقد قاموا بقياسه باستخدام

الأطفال في جميع البلدان النامية، وهو لا يتعلق بالمعدل الوسطي لسوء التغذية، وبعد الفشل في معالجة هذا الجور سبباً للظلم الاجتماعي، كما أن خفض المعدل الإجمالي لسوء التغذية لا يؤدي بالضرورة إلى تخفيف وطأة الجور. ومن هنا كان ينبغي أن تأخذ السياسات بالحسبان توزيع سوء التغذية بين الأطفال في جميع المجموعات الاقتصادية والاجتماعية.

والاقتصادي أنماطاً مختلفة أطلق عليها مصطلح الحرمان الجسيم وتأخير الاستحقاقات والاستبعاد. ورغم أن المستويات الوسطية لسوء التغذية كانت أعلى قيمةً باستخدام المعايير المرجعية الجديدة لمنظمة الصحة العالمية، فإن تقديرات الجور الاجتماعي والاقتصادي لم تتأثر تأثيراً كبيراً بتغيير معايير النمو. الاستنتاج: هناك جور اجتماعي واقتصادي في ما يتعلق بسوء التغذية لدى

References

- Bryce J, Boschi-Pinto C, Shibuya K, Black RE, and the WHO Child Health Epidemiology Reference Group. WHO estimates of the causes of death in children. *Lancet* 2005;365:1147-52. PMID:15794969 doi:10.1016/S0140-6736(05)71877-8
- Murray CJL, Lopez AD. Global mortality, disability, and the contribution of risk factors: Global Burden of Disease Study. *Lancet* 1997;349:1436-42. PMID:9164317 doi:10.1016/S0140-6736(96)07495-8
- de Onis M, Blössner M. The World Health Organization Global Database on Child Growth and Malnutrition: methodology and applications. *Int J Epidemiol* 2003;32:518-26. PMID:12913022 doi:10.1093/ije/dyg099
- de Onis M, Frongillo EA, Blössner M. Is malnutrition declining? An analysis of changes in levels of child malnutrition since 1980. *Bull World Health Organ* 2000;78:1222-33. PMID:11100617
- Braveman P, Tarimo E. Social inequalities in health within countries: not only an issue for affluent nations. *Soc Sci Med* 2002;54:1621-35. PMID:12113445 doi:10.1016/S0277-9536(01)00331-8
- Wagstaff A. Socioeconomic inequalities in child mortality: comparisons across nine developing countries. *Bull World Health Organ* 2000;78:19-29. PMID:10686730
- Gwatkin DR. Health inequalities and the health of the poor: What do we know? What can we do? *Bull World Health Organ* 2000;78:3-18. PMID:10686729
- Gwatkin DR. Poverty and inequalities in health within developing countries: filling the information gap. In: Leon DA, Walt G, eds. *Poverty, inequality, and health: an international perspective*. Oxford: Oxford University Press; 2000.
- Zere E, McIntyre D. Inequities in under-five child malnutrition in South Africa. *Int J Equity Health* 2003;2:7. PMID:14514357 doi:10.1186/1475-9276-2-7
- Wagstaff A, van Doorslaer E, Watanabe N. On decomposing the causes of health sector inequalities with an application to malnutrition inequalities in Vietnam. *J Econom* 2003;112:207-23. doi:10.1016/S0304-4076(02)00161-6
- Larrea C, Freire W. Desigualdad social y malnutrición infantil en cuatro países andinos [Social inequality and child malnutrition in four Andean countries]. *Rev Panam Salud Publica* 2002;11:356-64. PMID:12162832 doi:10.1590/S1020-49892002000500010
- Thang NM, Popkin BM. In an era of economic growth, is inequity holding back reductions in child malnutrition in Vietnam? *Asia Pac J Clin Nutr* 2003;12:405-10. PMID:14672863
- Fotso JC, Kuate-Defo B. Measuring socioeconomic status in health research in developing countries: should we be focusing on households, communities or both? *Soc Indic Res* 2005;72:189-237. doi:10.1007/s11205-004-5579-8
- Hong R. Effect of economic inequality on chronic childhood undernutrition in Ghana. *Public Health Nutr* 2007;10:371-8. PMID:17362533 doi:10.1017/S1368980007226035
- Wagstaff A, Watanabe N. *Socioeconomic inequalities in child malnutrition in the developing world* [Policy Research Working Paper 2434]. World Bank, 2000.
- Pradhan M, Sahn DE, Younger SD. Decomposing world health inequality. *J Health Econ* 2003;22:271-93. PMID:12606146 doi:10.1016/S0167-6296(02)00123-6
- Smith LC, Ruel MT, Ndiaye A. Why is child malnutrition lower in urban than in rural areas? Evidence from 36 developing countries. *World Dev* 2005; 33:1285-305. doi:10.1016/j.worlddev.2005.03.002
- WHO Child Growth Standards. *Length/height-for-age, weight-for-age, weight-for-length, weight-for-height and body mass index-for-age*. Geneva: WHO; 2006.
- Garza C, de Onis M. Rationale for developing a new international growth reference. *Food Nutr Bull* 2004;25 Suppl. 1;S5-14. PMID:15069915
- Physical status: the use and interpretation of anthropometry* [Report of a WHO Expert Committee; Technical Report Series No. 854]. Geneva: WHO; 1995.
- Erreygers G. Correcting the concentration index. *J Health Econ*. E-published ahead of print. doi:10.1016/j.jhealeco.2008.02.003
- Anonymous. Use and interpretation of anthropometric indicators on nutritional status. WHO Working Group. *Bull World Health Organ* 1986;64:929-41. PMID:3493862
- Filmer D, Pritchett L. Estimating wealth effects without expenditure data - or tears: An application to educational enrollments in states of India. *Demography* 2001;38:115-32. PMID:11227840
- Van de Poel E, O'Donnell O, van Doorslaer E. Are urban children really healthier? Evidence from 47 developing countries. *Soc Sci Med* 2007; 65:1986-2003. PMID:17698272 doi:10.1016/j.socscimed.2007.06.032
- Wagstaff A, Paci P, van Doorslaer E. On the measurement of inequalities in health. *Soc Sci Med* 1991;33:545-7. PMID:1962226 doi:10.1016/0277-9536(91)90212-U
- Wagstaff A. The bounds of the concentration index when the variable of interest is binary, with an application to immunization inequality. *Health Econ* 2005;14:429-32. PMID:15495147 doi:10.1002/hec.953
- Wagstaff A, van Doorslaer E. Measuring and testing for inequity in the delivery of health care. *J Hum Resour* 2000;35:716-33. doi:10.2307/146369
- O'Donnell O, van Doorslaer E, Wagstaff A, Lindelow M. *Analyzing health equity using household survey data: A guide to techniques and their implementation*. Washington: World Bank; 2007.
- World health report 2003: shaping the future*. Geneva: WHO; 2003.
- Larrea C, Montalvo P, Ricaurte AM. *Child malnutrition, social development and health services in the Andean Region* [Research Network Working Paper R-495]. Washington: Inter-American Development Bank; 2005.
- de Onis M, Onyango A, Borghi E, Garza C, Yang H, for the WHO Multicentre Growth Reference Study Group. Comparison of the World Health Organization child growth standards and the National Center for Health Statistics/WHO international growth reference: implications for child health programmes. *Public Health Nutr* 2006;9:942-7. PMID:17010261 doi:10.1017/PHN20062005
- Houweling TAJ, Kunst AE, Mackenbach JP. Measuring health inequality among children in developing countries: does the choice of the indicator of economic status matter? *Int J Equity Health* 2003;2:8. PMID:14609435 doi:10.1186/1475-9276-2-8
- Wagstaff A, Watanabe N. What difference does the choice of SES make in health inequality measurement? *Health Econ* 2003;12:885-90. PMID:14508873 doi:10.1002/hec.805
- Mosley WH, Chen LC. An analytical framework for the study of child survival in developing countries. *Popul Dev Rev* 1984;10:25-45. doi:10.2307/2807954
- Ruel MT, Levin CE, Armar-Klemesu M, Maxwell D, Morris SS. Good care practices can mitigate the negative effects of poverty and low maternal schooling on children's nutritional status: Evidence from Accra. *World Dev* 1999;27:1993-2009. doi:10.1016/S0305-750X(99)00097-2
- United Nations Millennium Development Goals. Available from: <http://www.un.org/millenniumgoals/> [accessed on 18 February 2008].