

## XENORYCTES NUDUS, N. SP. (ACARINA: GLYCYPHAGIDAE), A NEW HYPOPUS FROM THE SMOKY SHREW, *SOREX FUMEUS*, IN NORTH AMERICA

By A. Fain<sup>1</sup> and J. O. Whitaker, Jr.<sup>2</sup>

**Abstract:** *Xenoryctes nudus*, n. sp. is described from 3 hypopi from *Sorex fumeus* from North Carolina. It is easily distinguished from other species in the genus by the absence of any surface ornamentation on the dorsal shields. A key is given to the genus *Xenoryctes*.

Previously 3 species of hypopial mites have been described in the genus *Xenoryctes*. They are *X. krameri* (Michael, 1886), *X. punctatus* Fain, 1968, and *X. latiporus* Fain & Whitaker, 1973, all from mammals of the order Insectivora. The junior author has recently collected specimens of a new species in this genus from *Sorex fumeus* from North Carolina. The previously known species have a distinct pattern on the dorsum, consisting of either numerous small pits or a network of lines. In the new species, the dorsum is completely smooth and devoid of any pattern. Epimera III and IV are fused in the new species, as in *X. punctatus*, but *X. nudus*, n. sp. may be distinguished from *X. punctatus* and the other 2

described species by the very short outer pair of palposomal setae and the absence of setae on femur IV, in addition to the structure of the dorsal shields.

The purpose of this paper is to describe the new species and to present a key to the species presently known in the genus.

Family GLYCYPHAGIDAE Berlese, 1887

Genus **XENORYCTES** Zachvatkin, 1941

***Xenoryctes nudus*, n. sp.** FIG. 1-4

This species is known only from the hypopus.

**HYPOPUS (FIG. 1-4):** Holotype 243  $\mu$  long and 160  $\mu$  wide. In 2 paratypes the length  $\times$  width are 240  $\mu \times$  158  $\mu$  and 255  $\mu \times$  165  $\mu$ , respectively. Anterior extremity in a rounded cone. Posterior extremity distinctly concave. Dorsum very weakly punctate, without pits or network. Sejugal furrow well developed. Epimera III-IV fused. Inner claspers with 8-10 ridges, outer claspers with 9-10 ridges. Palposoma with 2 pairs of short hairs and 1 pair of short solenidia, 3.4 to 3.6  $\mu$  long. *Chaetotaxy of idiosoma*: as in *X. krameri* [see redescription of that species by Fain (1969)]. *Legs*: Tarsi with 8-8-8-8 setae. Tibiae 2-2-1-1. Genua 2-2-1-0. Femora 1-1-0-0. Genu I bears 2 thick, barbed setae, 13 and 17  $\mu$  long, respectively. *Solenidiotaxy*: on tarsus I,  $\omega 1$  is shorter (12  $\mu$ ) but thicker than  $\omega 3$  (15  $\mu$ ) and inflated apically. Famulus in the shape of a spine 4 to 5  $\mu$  long.

<sup>1</sup>Institut de Médecine Tropicale Prince Leopold, Antwerpen, Belgium.

<sup>2</sup>Department of Life Sciences, Indiana State University, Terre Haute, Indiana 47809, U.S.A.

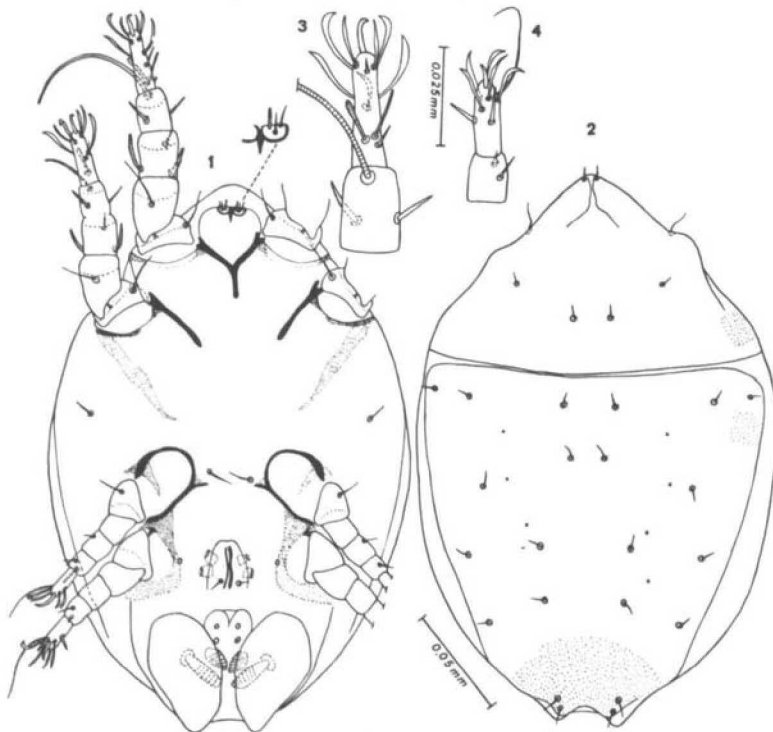


FIG. 1-4. *Xenoryctes nudus*, n. sp. (1) Hypopus, ventral view. (2) Hypopus, dorsal view. (3) Leg II. (4) Leg IV.

*Host and locality:* On the hair of *Sorex fumeus* (collection no. JOW 8795), North Carolina, Clay Co., Fires Creek, Navel Branch, 19.IV.1974, J. O. Whitaker, Jr. (holotype and 2 paratype hypopi). Type in the U.S. National Museum of Natural History; 2 paratypes in the collections of the authors.

KEY TO HYPOPI OF SPECIES OF THE GENUS  
*Xenoryctes*

1. Dorsal surface of body completely or partly covered by a network of lines. Epimera III–IV short, widely separated. Palposoma with 1 pair of very short solenidia and 2 pairs of minute setae of equal length.....2  
Dorsum either with numerous small pits, or smooth and without any sculpturing. Epimera III and IV either close to each other or fused. Palposoma variable.....3
2. Dorsal surface of body completely covered with a network of lines. Anterior extremity pointed. Epimera III longer. On *Talpa europaea* and various other Insectivora and on Cricetidae. Europe.....  
.....**krameri krameri** (Michael, 1886)  
Dorsal surface of body only partly covered with a network of lines. Anterior extremity rounded. Epimera III shorter. On *Urotrichus talpoides*. Japan.....  
.....**krameri japonensis**Fain, Lukoschus & Uchikawa, 1974
3. Dorsal surface with numerous pits. Outer palposomal

- setae 2 to 3 × longer than inner palposomal setae.  
Femur IV with 1 seta.....4  
Dorsal surface of body without pits. Outer and inner palposomal setae equal and very short. Epimera III and IV fused. Femur IV without setae. On *Sorex fumeus*. U.S.A. ....**nudus, n. sp.**
4. Dorsal surface of body with numerous regular and very small pits. Body larger (210–240 μ long × 143–168 μ wide). Solenidion *phi* of tibia I relatively longer. On *Talpa europaea*. Europe.....**punctatus** Fain, 1968  
Dorsal surface of body with numerous irregular and larger pits. Body smaller (174 μ long × 111 μ wide). Solenidion *phi* of tibia I relatively shorter. On *Scalopus aquaticus* and *Spermophilus tridecemlineatus*. U.S.A. ....  
.....**latiporus** Fain & Whitaker, 1973

LITERATURE CITED

- Fain, A.** 1969a. Les deutonymphes hypopiales vivant en association phorétique sur les mammifères (Acarina: Sarcoptiformes). *Bull. Inst. Roy. Sci. Nat. Belg.* **45**: 1–262.  
1969b. Morphologie et cycle évolutif des Glycyphagidae commensaux de la taupe *Talpa europaea* (Sarcoptiformes). *Acarologia* **11**: 750–95.  
**Fain, A. & J. O. Whitaker, Jr.** 1973. Phoretic hypopi of North American mammals (Acarina: Sarcoptiformes, Glycyphagidae). *Acarologia* **15**: 144–70.  
**Fain, A., F. Lukoschus & K. Uchikawa.** 1974. Notes on three hypopi (Acarina: Sarcoptiformes) phoretic on mammals in Japan. *Annot. Zool. Jap.* **47**: 110–14.