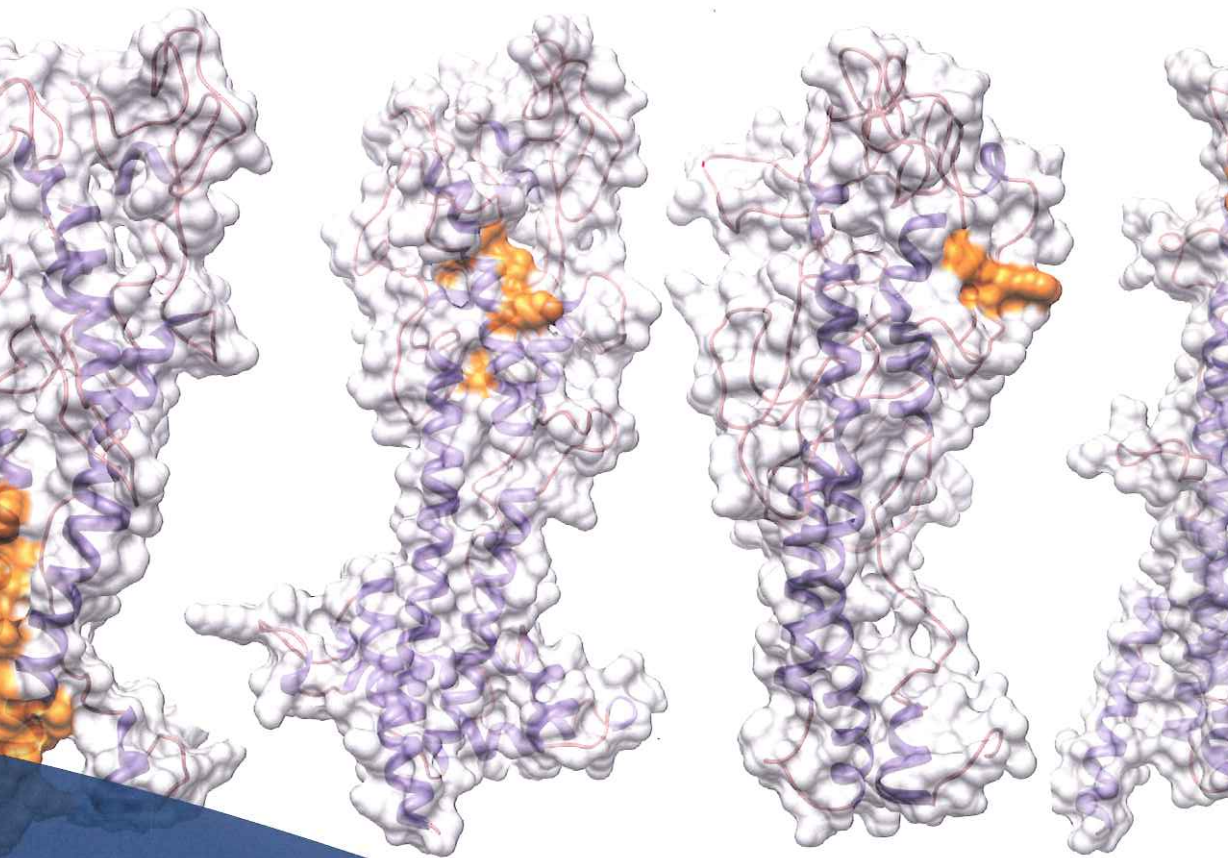


Development of innovative diagnostics for human African trypanosomiasis, based on synthetic peptides

Proefschrift voorgelegd tot het behalen van de graad van doctor in de Wetenschappen aan de Universiteit Antwerpen te verdedigen door

Liesbeth Van Nieuwenhove



Departement Biologie

Instituut voor Tropische Geneeskunde
Departement Biomedische Wetenschappen

Antwerpen 2012

PROMOTOR

prof. Yves Guisez

CO-PROMOTOR

prof. Philippe Büscher



 **Universiteit
Antwerpen**

LN.Q
22474
[2012]



Departement Biologie, Universiteit Antwerpen

Departement Biomedische Wetenschappen, Instituut voor Tropische
Geneeskunde Antwerpen

**Development of innovative diagnostics for human African
trypanosomiasis, based on synthetic peptides**

**Ontwikkeling van innovatieve diagnostische tests voor humane
Afrikaanse trypanosomiase, gebaseerd op synthetische peptiden**

Proefschrift voorgelegd tot het behalen van de graad van Doctor
in de Biologie aan de Universiteit Antwerpen, te verdedigen door

Liesbeth Van Nieuwenhove

Promotor: Prof. Yves Guisez

Antwerpen 2012

Co-promotor: Prof. Philippe Büscher

Cover image:

Peptide sequences with diagnostic potential for *Trypanosoma brucei gambiense*, mapped on models of variant surface glycoproteins LiTat 1.3 and LiTat 1.5. Image made with Chimera software by Michael Humbert, Dana-Farber Cancer Institute and Harvard Medical School, Boston, Massachusetts, United States of America.

Cover design:

Natacha Hoevenaegel, Nieuwe Media Dienst, University of Antwerp, Belgium

Contents.....	iii
List of abbreviations.....	vii
Structure of amino acids.....	xii
Summary.....	xiii
Samenvatting.....	xix
Introduction.....	1
1. Human African Trypanosomias or sleeping sickness.....	1
1.1 History of human African trypanosomiasis control.....	1
1.2 <i>Trypanosoma brucei</i>	5
1.3 Bloodstream trypomastigote surface proteins.....	10
1.4 Diagnosis.....	16
2. Identification of peptides to replace native VSG antigens.....	28
2.1 Epitope discovery.....	28
2.2 Peptide phage display technology.....	29
Objective and experimental strategy.....	35
1. Rationale.....	37
2. Working Hypothesis.....	37
3. Objective.....	38
Characterisation of <i>Trypanosoma brucei gambiense</i> variant surface glycoprotein LiTat 1.5.....	39
Identification of peptide mimotopes of <i>Trypanosoma brucei gambiense</i> variant surface glycoproteins.....	51
Identification of mimotopes with diagnostic potential for <i>Trypanosoma brucei gambiense</i> variant surface glycoproteins with human antibody fractions.....	79
A LiTat 1.5 variant surface glycoprotein-based peptide with diagnostic potential for <i>Trypanosoma brucei gambiense</i>	109
Combinations of synthetic peptides may replace the native variant surface glycoproteins LiTat 1.3 and LiTat 1.5 in antibody detection tests for diagnosis of <i>Trypanosoma brucei gambiense</i> infection.....	121
General discussion & future perspectives.....	139

1. General discussion	141
2. Future perspectives of HAT diagnostics	154
3. General conclusion.....	156
Reference list.....	159
Curriculum vitae.....	185